

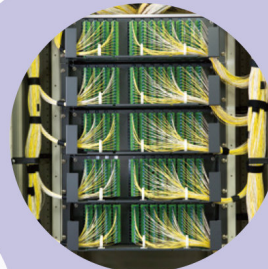
Lynx-CustomFit™ Splice-On Connector



Agile solutions - fiber optic termination



Full Lineup



Just Length



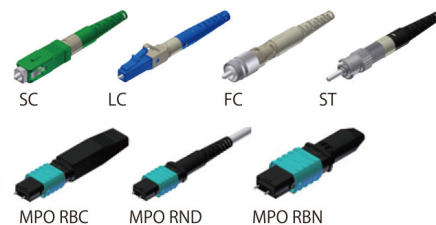
No pre-survey

Lynx-CustomFit™ Splice-On Connector Ver.2

- Low insertion loss
- Low return loss for analogue systems, etc.
- Wide temperature stability

Standards and Optical performance

	SC	LC	FC	ST	Q8MPO / 12MPO
Interface standard	IEC61754-4	IEC61754-20	IEC61754-13	IEC 61754-2	IEC 61754-7-1
Insertion Loss (against master plug)	SMF: Ave. 0.2dB, Max. 0.3dB MMF: Ave. 0.1dB, Max. 0.25dB				SMF(Std Loss) : Max.0.75dB SMF(Low Loss): Max. 0.4dB MMF(Low Loss): Max. 0.4dB
Return Loss (against master plug)	SMF: ≥ 60dB (APC), ≥ 55dB (UPC) MMF: ≥ 30dB (PC)				



Lineup for Single fiber connector

Connector type	Polishing type	Fiber type	Connector color	Fiber / Cord diameter	Boot type
SC LC FCM ST*1	APC	SM	Green	250 / 900μm Tight Buffer 900μm Loose Buffer 2mm with 900μm Tight Buffer 2mm with 900μm Loose Buffer 3mm with 900μm Tight Buffer	Standad boot Short boot *2
	UPC	SM	Blue		
	PC	MM50(OM2)	Black		
		MM50(OM3)	Aqua		
		MM62.5(OM1)	Beige		

*1 ST connector is available for SM(UPC polishing) and MM(PC polishing).

*2 Short boot is available for SC and LC type of 250 / 900 μm tight buffer.

Lineup for MPO connector

Guide pin	Fiber/Polishing type	Connector color	Cord diameter
With / Without guide pin	SM Low loss	Yellow	RBN: 8c/12c Bare Ribbon RND: 8c/12c Round cord (φ 3mm) RBC: 8/c12c Ribbon cord
	SM Standard loss	Green	
	MM50(OM2) Low loss	Black	
	MM50(OM3) Low loss	Aqua	

Assembly Tool

Tool Name [Part No.]		Fiber cleaver [FC-8R-MC]	Jacket remover [JR-M03]	Hot jacket remover [JR-6]	Sheath splitter [LYNX-CORDTOOL-1.6-2.4]	Sheath splitter [LYNX-CORDTOOL-2.0-3.0]	Kevlar snips [N-57]
Appearance							
Single Fiber	Cord	●	●	—	● for 1.7mm cord	● for 2mm cord / 3mm cord	●
	Fiber	●	●	● for φ0.25~0.4mm fiber	—	—	—
MPO	Round Cord / Ribbon Cord	●	—	●	—	● for round cord / ribbon cord	●
	Bare Ribbon	●	—	●	—	—	—

Fiber holders for single fiber connector

Type	Part No. Left side (Setting fiber / cord)	Part No. Right side (Setting ferrule sub-assembly)
250μm fiber	FHS-025 LYNX2-S-LB5(2MM)	LYNX2-C (Plastic, Standard) * LYNX2-UML-C (Metal, Option)
900μm Tight Buffer	FHS-09 LYNX2-UML-S	
900μm Loose Buffer	LYNX2-S-LB5(2MM)	
2mm cord with 900μm Tight Buffer	LYNX2-UML-S	
2mm cord with 900μm Loose Buffer	LYNX2-S-LB5(2MM)	
3mm cord with 900μm Tight Buffer	LYNX2-UML-S	

* 1 pc of LYNX2-C holder is supplied with every 100 connectors.

Fiber holders for MPO connector

Type	Part No. Left side (Setting fiber / cord)	Part No. Right side (Setting ferrule sub-assembly)
Bare Ribbon	12-fiber: FHM-12 8-fiber: FHM-8	LYNX2-C(MT) (Plastic, Standard) * LYNX2-C(MT) Metal (Metal, Option)
Round Cord		
Ribbon Cord		

* 1 pc of LYNX2-C(MT) holder is supplied with every 100 connectors.

Sumitomo Electric Industries, Ltd.

Tokyo (Japan)
Sumitomo Electric Industries, Ltd.
<http://global-sei.com/fttx>

London (United Kingdom)
Sumitomo Electric Europe Ltd.
<http://www.sumielectric.com>

Raleigh (United States)
Sumitomo Electric Lightwave Corp.
<https://sumitomoelectriclightwave.com/contact-us/>

Dubai (U.A.E.)
Middle East Office
TEL: (971) 4-701-7338

Milano (Italy)
Sumitomo Electric Europe Ltd.
TEL: (39)-024-9638601

Melbourne (Australia)
SWS Australia Pty. Ltd.
TEL: (61) 3-8401-2800

San Paulo (Brazil)
SEI Brazil Solucoes Opticas Ltd.
<http://www.seibrazil.com.br>

Singapore
Sumitomo Electric
Asia Pacific Pte.Ltd.
<http://seps.com.sg/>

Gurgaon (India)
SEI Trading India Pvt. Ltd.
<http://www.sumitomosplicers.in/>

Hong Kong
Sumitomo Electric Trading
(Shenzhen), Ltd.
<http://www.seac-china.com/>

Bangkok (Thailand)
Sumitomo Electric(Thailand)Ltd.
<http://www.set-th.com/>

Manila (Philippines)
SEI (Philippines) Incorporated
TEL: (63) 2-811-2755~56