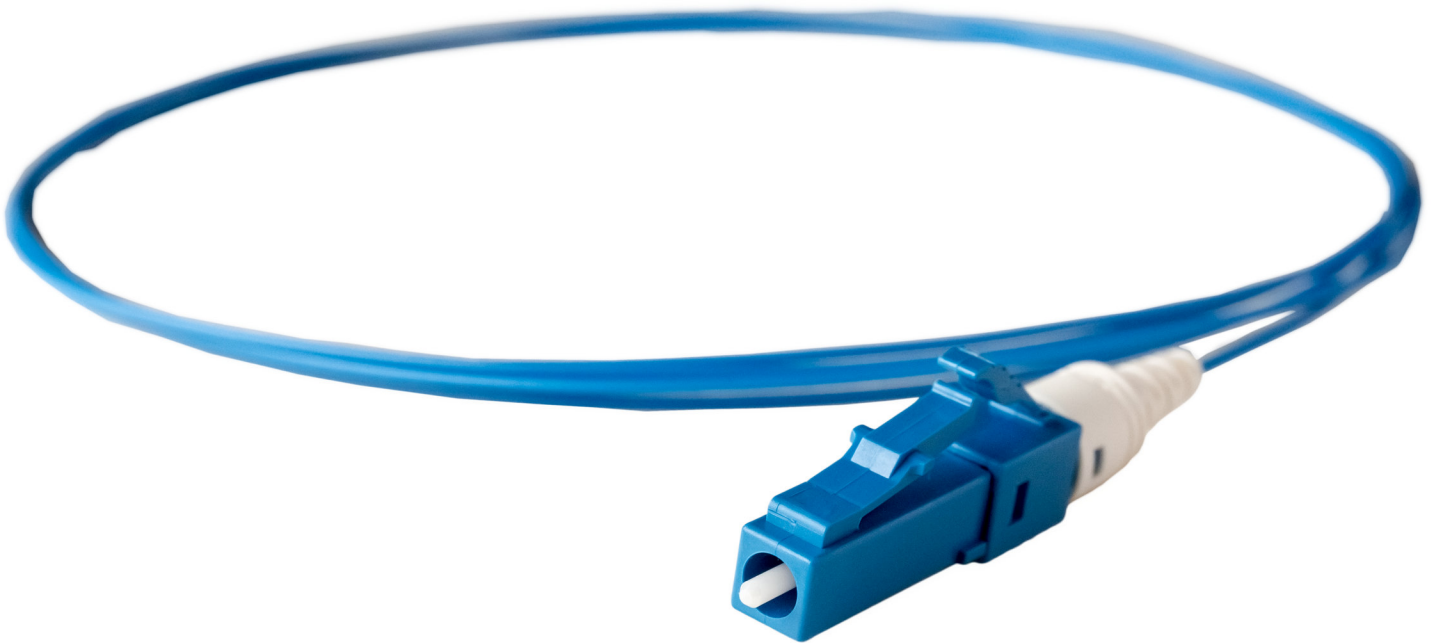


Quick-LC

Mechanical splice field assembly LC connector



Quick fibre terminations

Factory polished ferrule

No polishing, no glue, just quick, simple and reliable

Requires minimal tools: only a fibre jacket remover, fibre cleaver and cleaning wipes and optionally, a VFL for testing

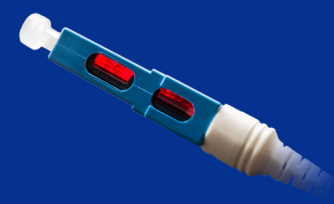
3 steps to quickly verify your connection



Measure the cleave length



Check for fibre bend



Verify with a VFL

Fibre	G652B, G652D, G657.A1 & G657.A2		MMF 62.5(OM1,) 50(OM2) & 50(OM3)		
Applicable coating types	250um primary coating, 900um tight buffer or semi-tight buffer secondary coated fibre (Note 3)				
Applicable cord types	1.6mm, 2mm & 3mm cord made with 900um tight buffer or semi-tight buffer secondary coated fibre (Note 3)				
Polishing	SPC	APC	PC		
Intermateability	IEC 61754-20 LC connector				
Qualification	TIA/EIA 568-C-3				
Operating temperature	Fibre types -40°C to 75°C, cord types -25°C to 70°C (connector only, not fibre or cord itself)				
Tensile strength	250um 3N, 900um 5N, 2mm and 3mm cord 50N				
Insertion loss (Note 1)	SM SPC	SM APC	PC-M6(OM1)	PC-M5(OM2)	PC-M5(OM3)
- Typical	0.2dB	0.3dB		0.1dB	
- Maximum	0.5dB	0.75dB		0.3dB	
Return loss (Notes 1 & 2)	SM SPC	SM APC	PC-M6(OM1)	PC-M5(OM2)	PC-M5(OM3)
- Typical	50dB	60dB (Note 4)		35dB	
- Minimum	40dB	50dB (Note 4)		22dB	
Colour					
Note 1	With Sumitomo standard tools and master plug. Values include the mechanical splice joint between the fibre stub in the connector				
Note 2	Valid at 23±5°C except				
Note 3	Not all semi-tight buffer fibres are compatible with Q-LC. Evaluation of applicability prior to ordering is recommended				
Note 4	Values quoted require use of a nominal 8° angle cleaver. If using a 'flat cleaver' minimum return loss would be 35dB.				
Note 5	Two fibre holders and two guide tools are included with every 100 connector kits purchased				

Ordering information

Item	Part number	Item	Part number
Connector kits		Q-LC-PC<10G>-3-F-T	IC023PD0012
Q-LC-PC<50>-025/090-F-T	IC023PD0002	Q-LC-PC<62.5>-3-F-T	IC023PD0011
Q-LC-PC<10G>-025/090-F-T	IC023PD0005	Q-LC-SPC<SM>-3-F-T	IC023PD0014
Q-LC-PC<62.5>-025/090-F-T	IC023PD0003	Q-LC-APC<SM>-3-A-T	IC023PD0016
Q-LC-SPC<SM>-025/090-F-T	IC023PD0004	Tools and accessories	
Q-LC-APC<SM>025/090-A-T	IC023PD0006	JR-M03 3 hole jacket remover	TA012PD0196
Q-LC-PC<50>-2-F-T	IC023PD0007	FC-8R-F cleaver with auto rotating blade	TA013PD0053
Q-LC-PC<10G>-2-F-T	IC023PD0009	FC-6RS-C cleaver with auto rotating blade	TA013PD0044
Q-LC-PC<62.5>-2-F-T	IC023PD0008	SE-AFC-08 cleaver for 8° end angles	TA013PD0049
Q-LC-SPC<SM>-2-F-T	IC023PD0013	Kevlar cutters	TA011PD0008
Q-LC-APC<SM>-2-A-T	IC023PD0015	Q-LC fibre holder and guide	IC007PD0196
Q-LC-PC<50>-3-F-T	IC023PD0010	Cord stripper/Q-SC_Q-LC/1.6 2.0 & 3.0mm	IC007PD0194

Sumitomo Electric reserves the right to alter product specifications without notice E&OE

Sumitomo Electric Europe Ltd www.sumielectric.com seel@sumielectric.com

Document part number TZC023DO0001-06 Document release date 2017-08-09

© Sumitomo Electric Europe Ltd

**SUMITOMO
ELECTRIC
GROUP**