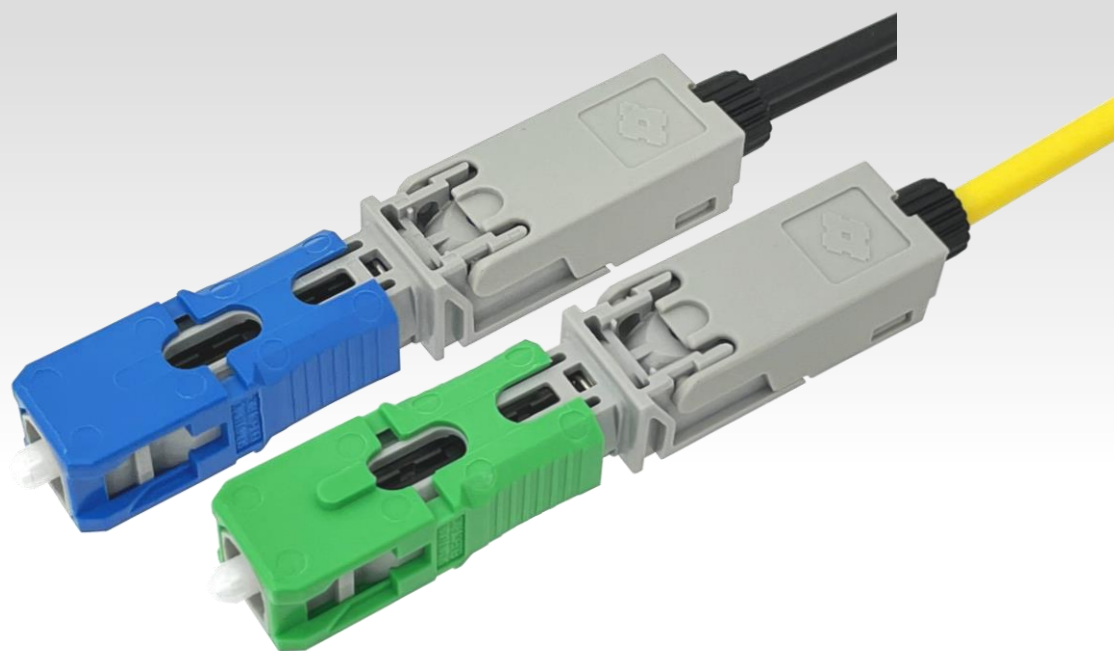


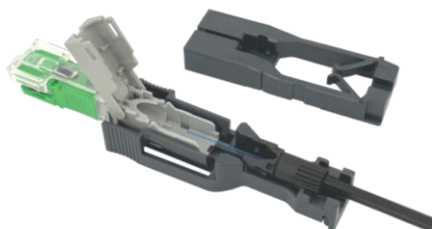
**NEW**

**Field Installable Connector for Flat Drop Cable,  
2mm/3mm cord and 250 $\mu$ m/900 $\mu$ m fiber**

# e-SC Connector Universal type



## Enhanced workability and toughness



New Assembly Guide Jig  
& Cut Spacer for more  
reliable termination



Wide fiber inlet  
for inserting  
fiber easily



New Cable securing  
system for tensile  
strength 50N (flat  
drop cable)

## Essential Features

- No polishing required.
- Applicable to flat drop cable, Cords and fibers
- Requires only Fiber Stripper, Fiber Cleaver and Cleaning materials
- Easy re-open with assembly guide jig to re-use.
- Available for NG-PON2 (Low insertion loss at 1625nm)

## Specification

Product Name	e-SC-APC<SM>A-6-U	e-SC-UPC<SM>F-6-U
Fiber Type	SM: G657.A1/A2 & B3(except hole assisted fiber)	
Media Type	Flat Drop Cable with 250μm fiber (1.6 x 2.0 and 2.0 x 3.1 mm) Φ2mm/Φ3mm Cord 250μm fiber and 900μm fiber (*3)	
Polish	APC	UPC
Insertion Loss (*1)	Typ. 0.3dB, Max ≤ 0.6dB at 1310nm, 1550nm & 1625nm	Typ. 0.2dB, Max. ≤ 0.5dB at 1310nm, 1550nm & 1625nm
Return Loss (*1)	≥ 50dB (with Flat Cleaver) at 1310nm, 1550nm & 1625nm	≥ 45dB (with Flat Cleaver) at 1310nm, 1550nm & 1625nm
Allowable tensile strength	Flat drop cable: 50N, 2mm/3mm cord: 25N, 250μm/900μm fiber: 3N	
Operating Temp.	-40°C to +75°C	
Interface	IEC 61754-4	
Qualification	ANSI/TIA 568.3-D (*2)	
Outer Housing Color	Green	Blue

(\*1) measured at room temperature with Sumitomo Electric standard fiber, tools and reference plug.

(\*2) There are some exceptions depending on characteristics of cable & fiber.

(\*3) it should be possible to remove 900μm and leave 250μm fiber intact

### Standard connector kit



### Required tools



 Sumitomo Electric Industries, Ltd.